

WWW.COMPEXSHOP.COM

01 WHO WE ARE

COMPEX SYSTEMS,
A SUBSIDIARY OF POWERMATIC
DATA SYSTEMS IN SINGAPORE
IS A GLOBAL OEM LEADER
IN WIRELESS COMMUNICATIONS

02 WHAT WE DO



PRODUCT DESIGN &
MANUFACTURING



WIRELESS CONNECTIVITY
HARDWARE



WIRELESS CONNECTIVITY
SOFTWARE



PARTNERSHIP WITH
QUALCOMM Atheros
- QCA DESIGN CENTRE

03 WHY US



COMPONENTS SOURCED
FROM DIRECT SUPPLIERS



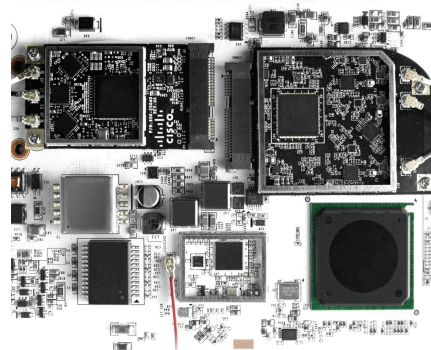
FLEXIBILITY IN DESIGNS
AND ORDER QUANTITY



RADIO FREQUENCY
EXPERTISE & HELP IN
CERTIFICATION PROCESS

WiFi **BEST WiFi**
2,4GHz | 5GHz **DATA RATES!**
524wifi.com Selling online since 2003

APPROVED



INDIVIDUALLY CALIBRATED

**WI-FI MODULES WITH QCA
REFERENCE DESIGN**

& WITH BEST TX POWER AND RX SENSITIVITY FOR

BEST WI-FI DATARATES

IN ALL YOUR HEAVY LOADED WI-FI APPS

INDUSTRY GRADE WI-FI MODULES

WITH EXTENDED TEMPERATURE RANGE UP TO +85°C

FOR MORE INFORMATIONS, SAMPLES REQUESTS AND BUSINESS PRICES FOR YOUR PROJECTS
PLEASE WRITE TO info@524wifi.com, CALL +420 775 262 900 OR VISIT :

WWW.COMPEXSHOP.COM (EU) OR WWW.524WIFI.COM (NA)



OUR key products



524wifi.com

e-mail us :
info@524wifi.com

11ac wave2

5GHz / 2,4GHz



WLE1216V5-20 WLE1216V2-20

- QCA9984 MU-MIMO 4x4 WiFi Module
 - TX Power 21dBm per chain
 - standard miniPCle size
 - CE/FCC certified
- max Rx Specification Sensitivity - 95dBm
- up to 1730 Mbps 5GHz / 800 Mbps 2,4GHz
- industrial grade version available -up to 85C



WLE600VX



WLE900VX

- QCA9880/9882 11ac dual band WiFi Module
 - TX power 21dBm per chain
 - available with 2x2 / 3x3 MIMO
 - standard miniPCle size version
 - CE/FCC/IC Certified
- max Rx Specification Sensitivity -95dBm
- up to 1300 Mbps (3*3) / 867 Mbps (2*2)
- industrial grade version available -up to 85C

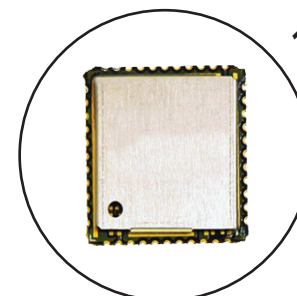
11ac wave2



WLT674 M.2 2230

- QCA6174A-5 MU-MIMO 2x2 dual band
 - WiFi + BLE 4.2 M.2 Module
 - TX power 18 dBm per chain
 - CE/FCC/IC certified
- max Rx Specification Sensitivity -76dBm
 - up to 867 Mbps

11ac wave2



WSD377 SDIO 3.0

- QCA9377-3 MU-MIMO 1x1 dual band
 - WiFi + BLE 4.2 SDIO Module
 - TX power 18 dBm per chain
 - CE/FCC/IC certified
- max Rx Specification Sensitivity - 97dBm
 - up to 433 Mbps